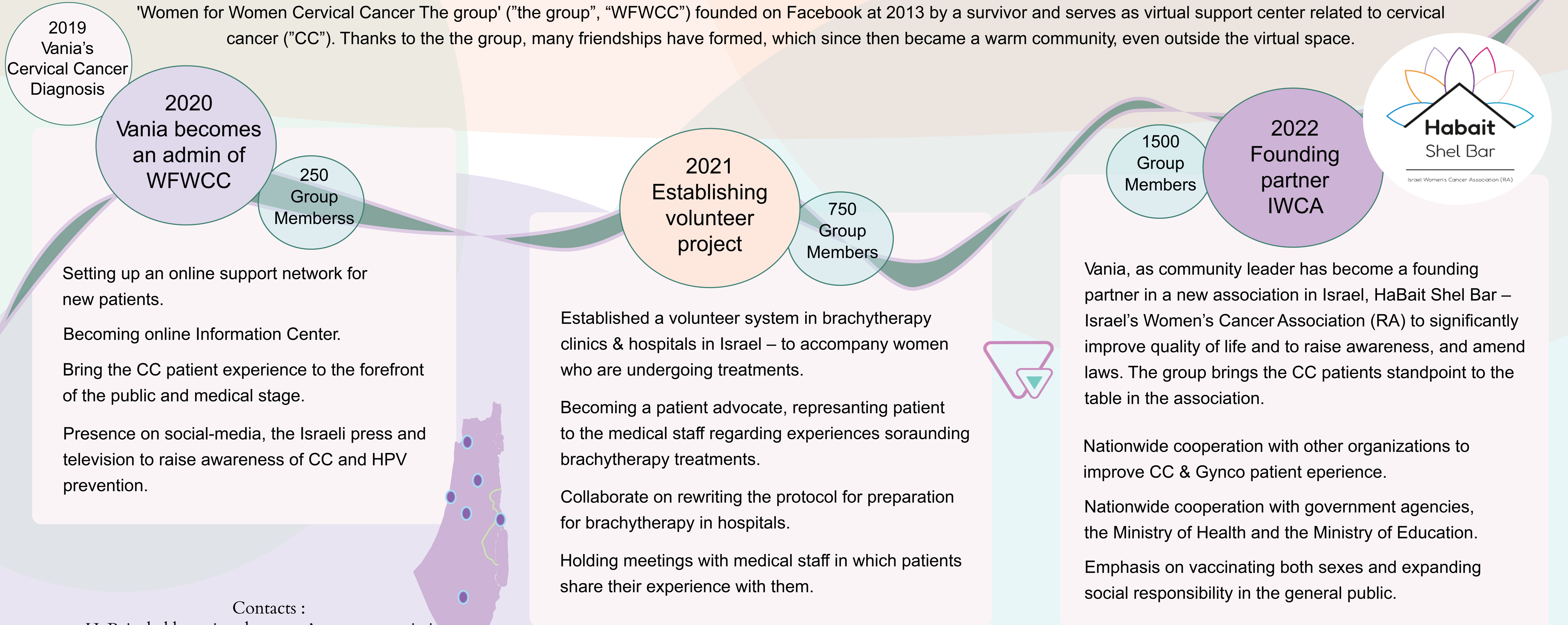


FROM A SMALL GROUP, TO A LARGE AND WARM VIRTUAL COMMUNITY, TO A BROAD NATIONAL ACTIVITY

VANIA BEN HUR PEER¹, BAR LEVY² 1. Founding partner, Head of Cervical Cancer department & Media' HaBait Shel Bar - Israel's Women's Cancer Association (RA) 2. CEO and Founder HaBait Shel Bar - Israel's Women's Cancer Association (RA) WFWCC Administrator



Contacts :

HaBait shel bar - israel women's cancer association
3 shmuel shnitzer, tel aviv, israel

Vania Ben Hur Peer: +972-54-7000-520, Vania@women-cancer.org

Bar Levy: +972-50-9585-275 Bar@women-cancer.org