

# Uterine Cancer



STAGE \_\_\_\_\_

GRADE \_\_\_\_\_

## PROCEDURES

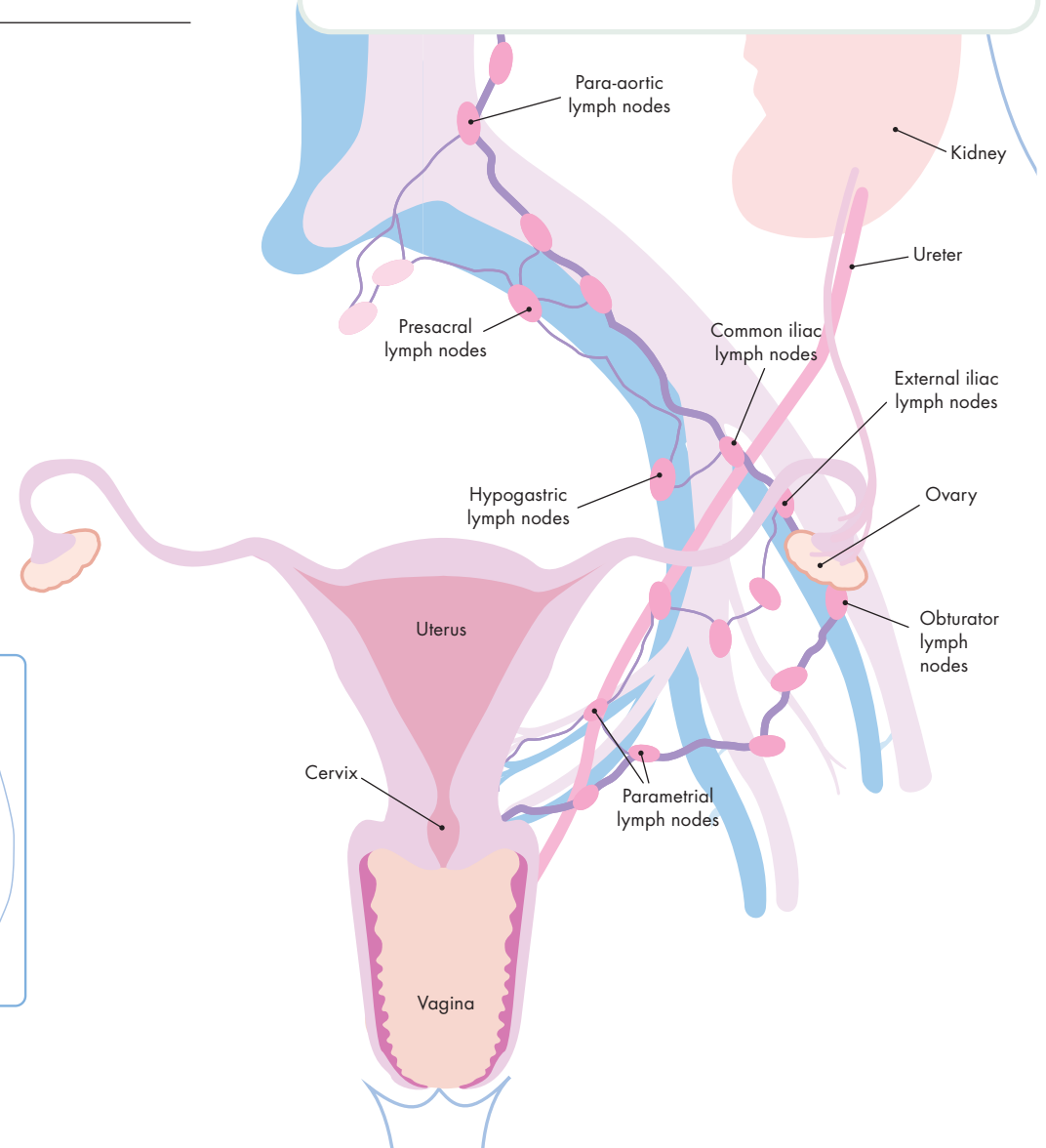
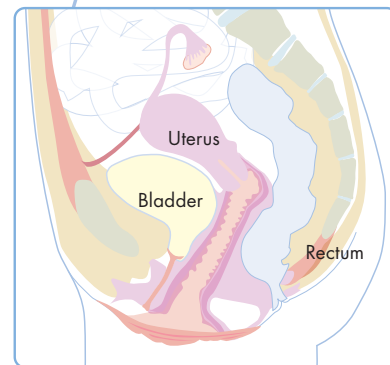
- Hysteroscopy + biopsy + hormonal intrauterine device (coil)
- **CHEMOTHERAPY**
- **SURGERY** - removal of:
  - Uterus (hysterectomy (open/keyhole))
  - Tubes and/or ovaries
  - Lymph nodes (sentinel / full)
- Omentum (Layer of fatty tissue resting on intra-abdominal organs)
- Biopsies any suspicious area in the abdomen
- Chemotherapy
- **Radiotherapy** external and/or internal (brachytherapy)

## SURGICAL COMPLICATIONS

- Bleeding
- Infection- wound/chest/ pelvis/urine
- Damage to bladder/ bowel/ureters/ nerves/blood vessels
- Secondary procedure to manage complication
- Blood clot
- Difficulty in passing urine or stools
- Swollen or painful legs – lymphoedema
- Menopause symptoms (i.e. hot flashes)
- Lymphocele (lymphatic fluid)
- Hernia at surgical site

## COMMON TREATMENT SIDE-EFFECTS

- Bleeding / Infection
- Inflammation of the bladder, bowel or skin
- Diarrhoea/incontinence / constipation
- Fatigue & Mood changes
- Menopause symptoms (i.e. hot flashes)
- Sexual dysfunction (i.e. vaginal dryness, painful sex)
- Hair loss
- Swollen or painful legs – lymphoedema
- Abnormal connection between bowel or bladder and vagina (fistula)
- Neuropathy (numbness of hands and feet)



PATIENT NUMBER STICKER HERE

